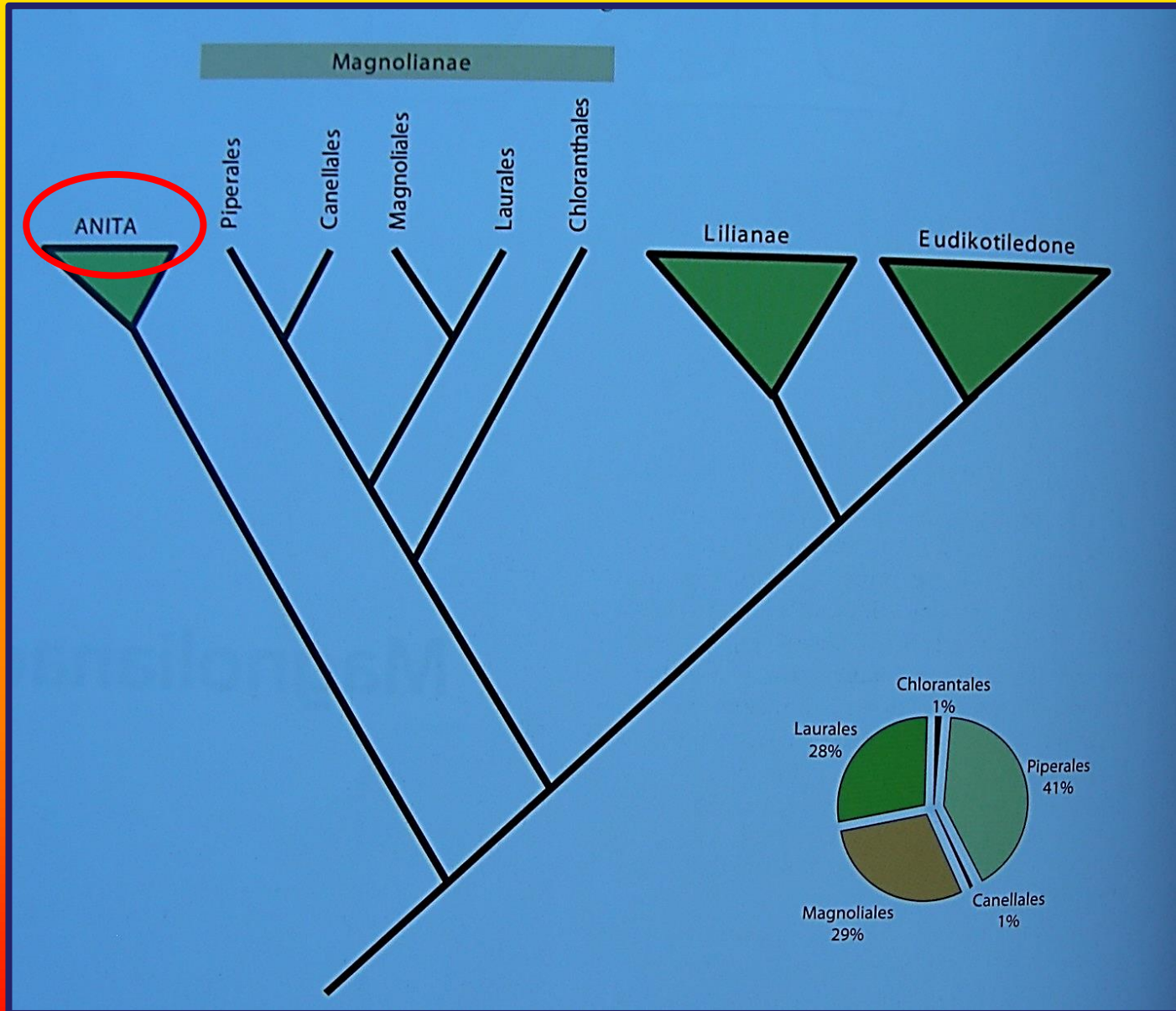


ANITA



ANITA

- Nadred: **Amborellanae**

Red: **Amborellales**

Porodica: **Amborellaceae**



- Nadred: **Nymphaeanae**

Red: **Nymphaeales**

Porodica: **Nymphaeaceae**



- Nadred: **Austrobaileyanae**

Red: **Austrobaileyales**

Porodice: **Illicaceae**, **Trimeniaceae**, **Austrobayleaceae**



A

N

I

T

A

Amborellaceae



Muški cvijet



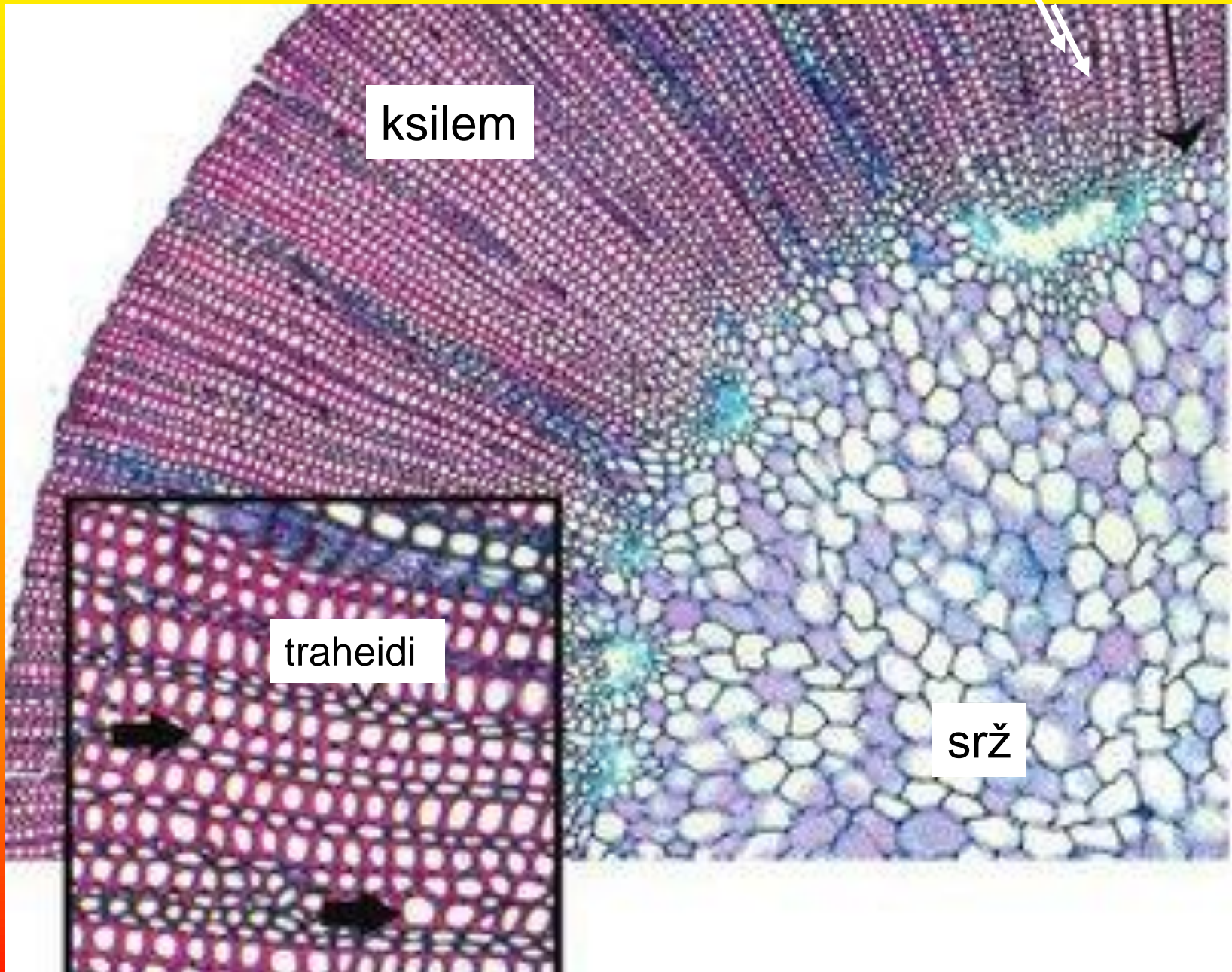
staminodija

Ženski cvijet



Amborella trichopoda





ksilem

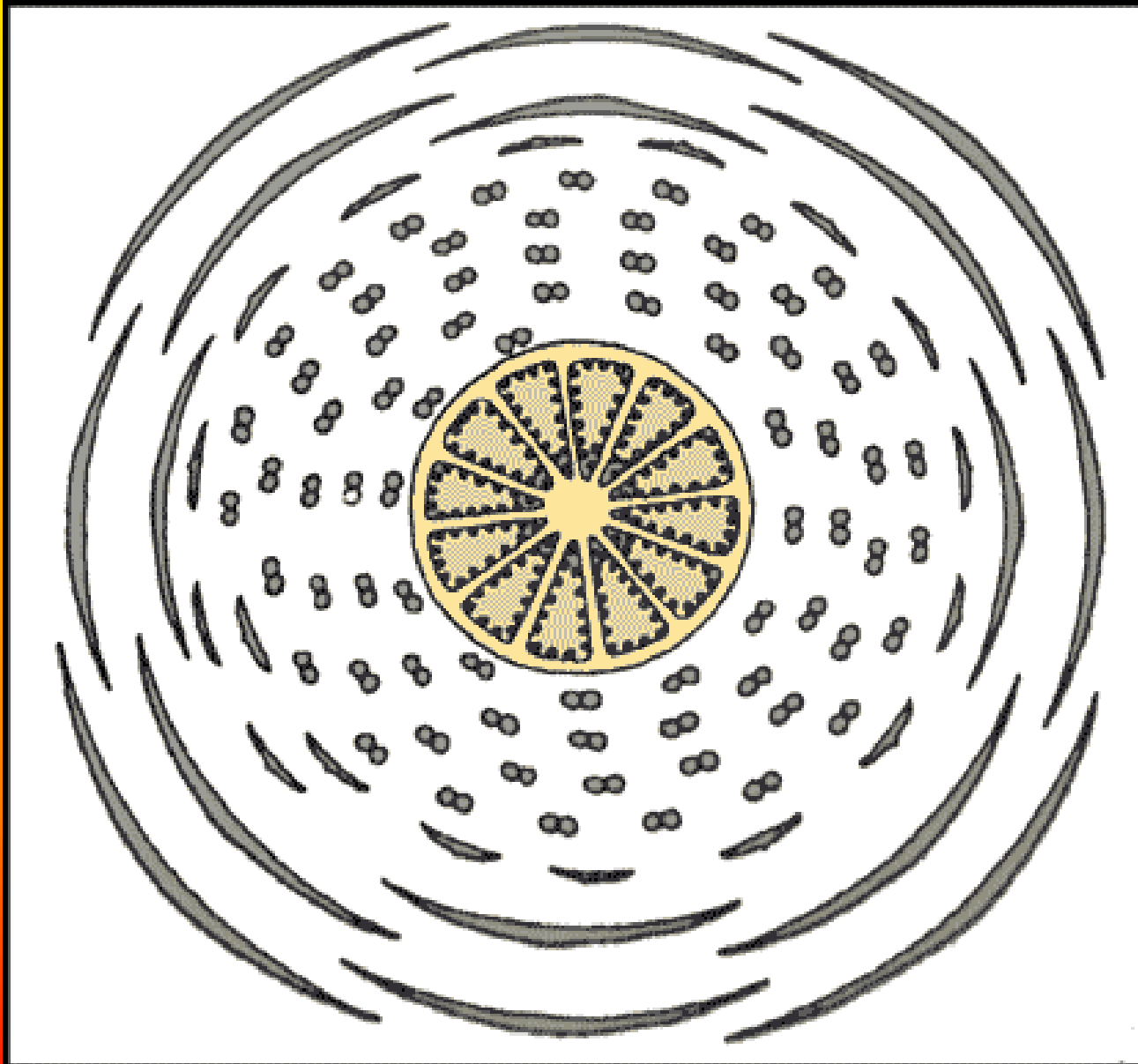
traheidi

srž

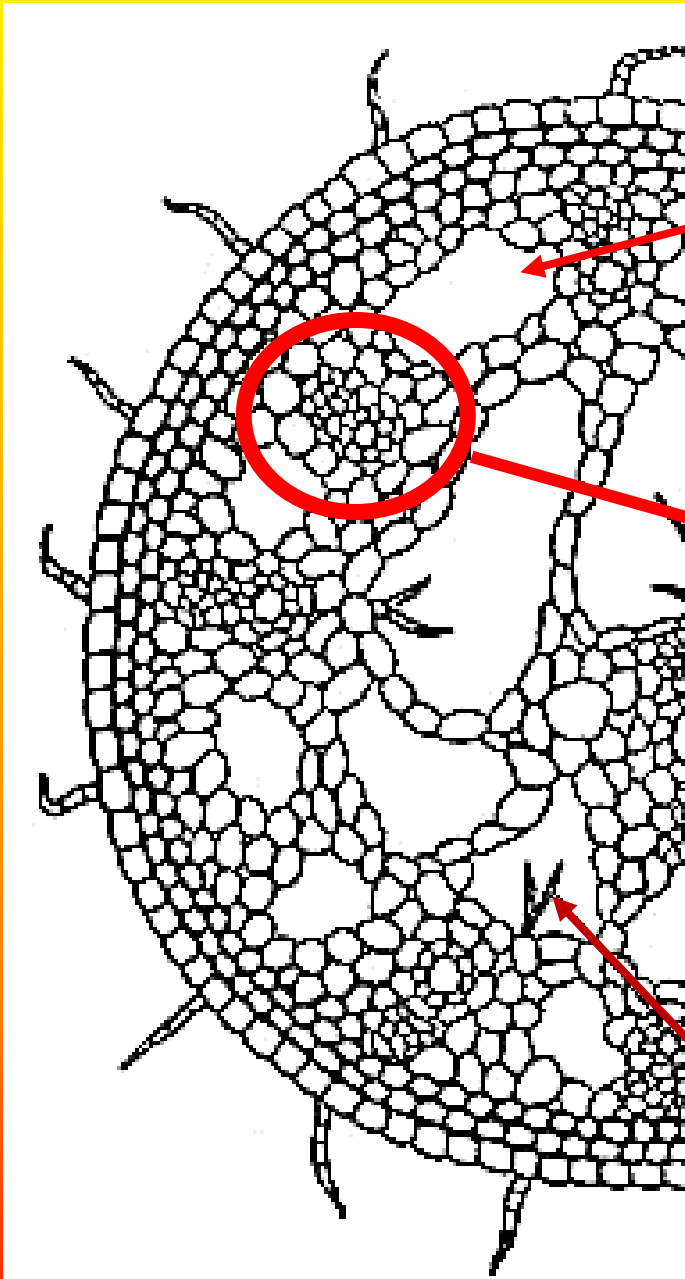
Nymphaeaceae



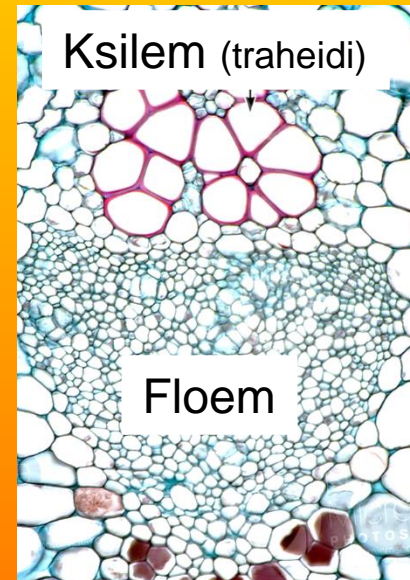
Cvjetni dijagram



*K₄ C_∞ A_∞ G(∞)



Aerenhim



Trihoidni sklereidi („unutrašnje dlake“)

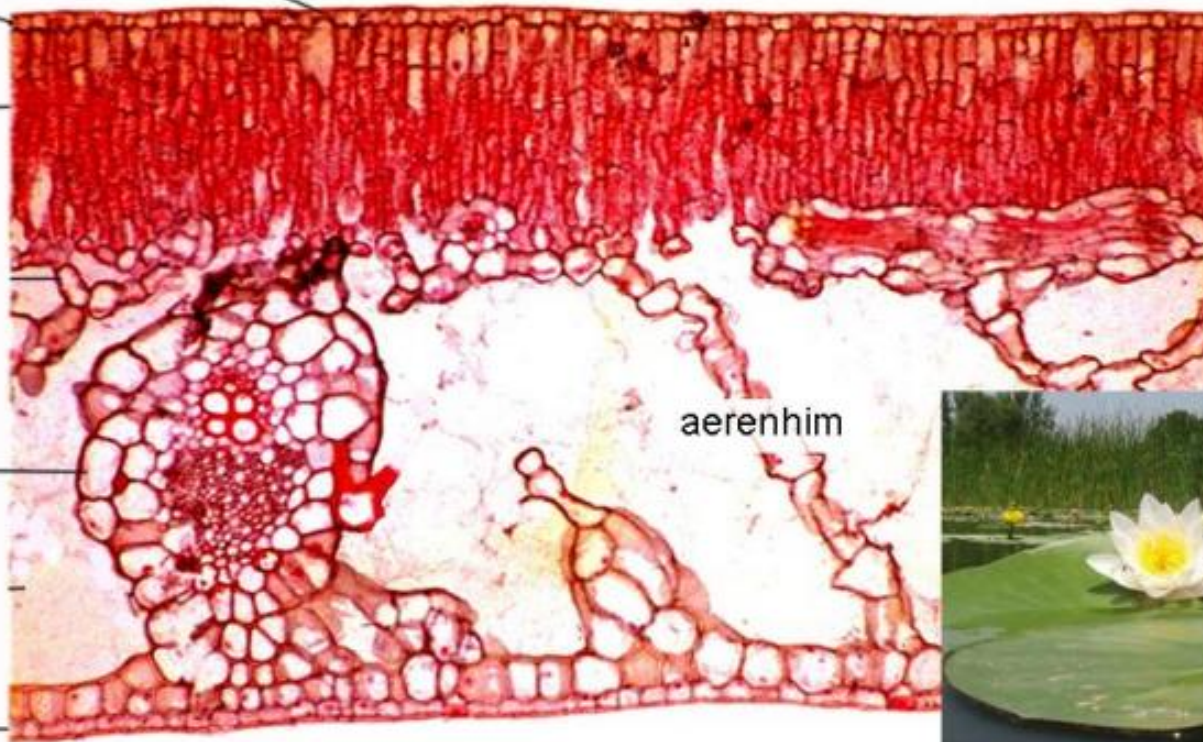
epidermis lica

stome

palisadno tkivo

provodni snopić

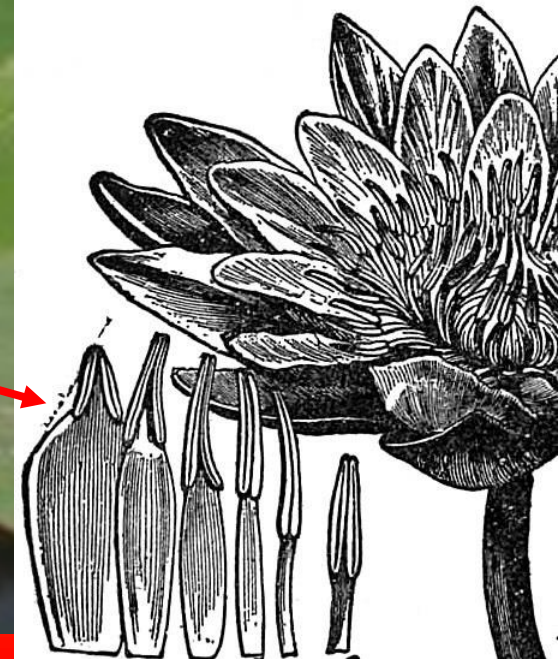
epidermis naličja



aerenhim



Nymphaea alba- bijeli lokvanj



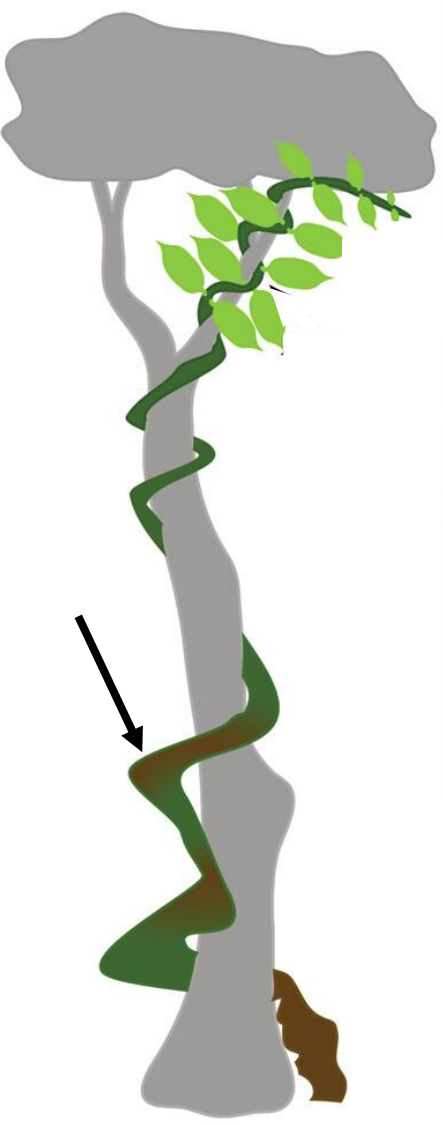
*K₂+2 C ∞ A ∞ G(∞)

Nuphar luteum- žuti lokvanj



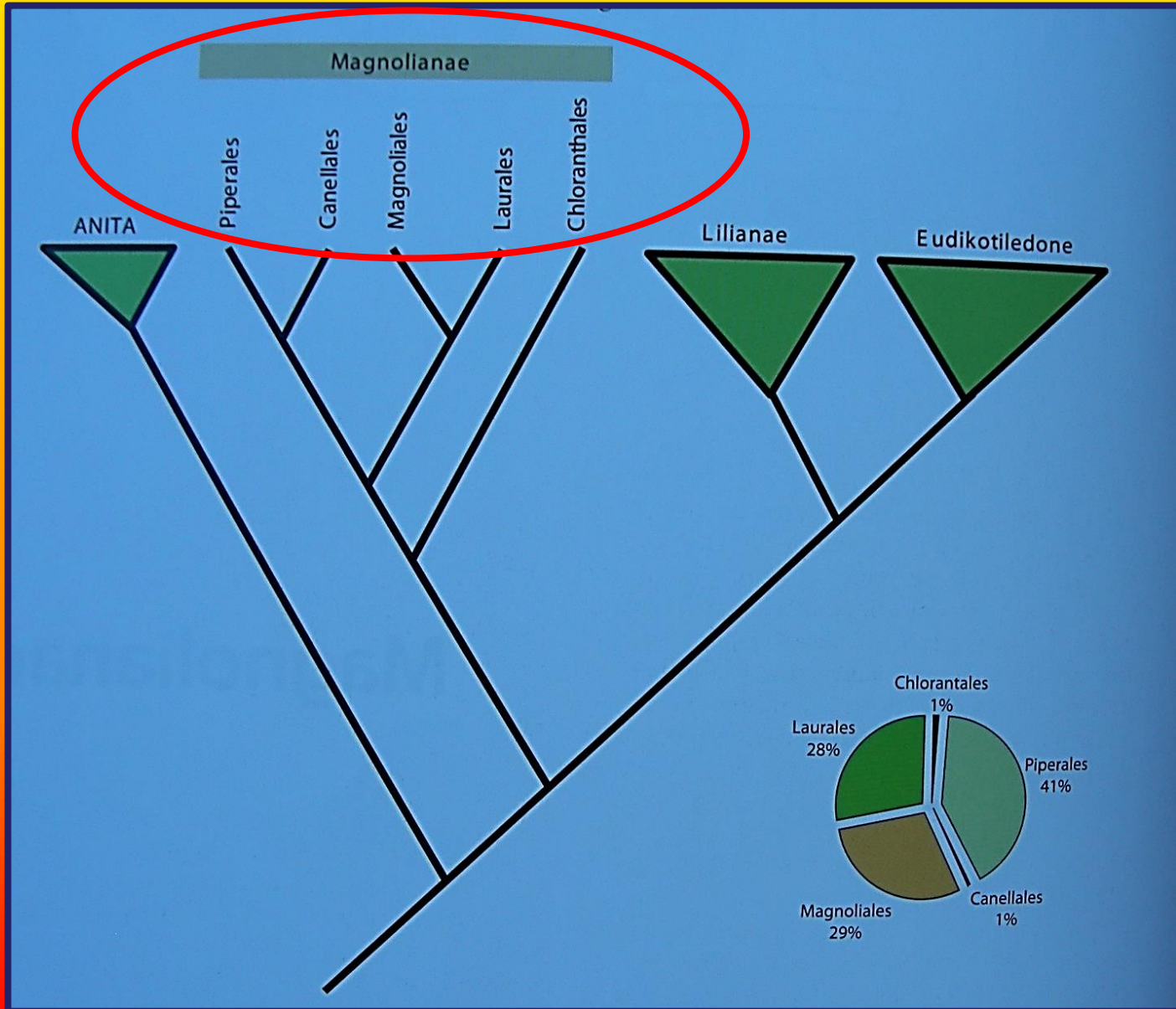
*K₅ C_∞ A_∞ G(∞)

Austrobayleaceae



Austrobaileya scandens

MAGNOLIANAE



Subordinaciona klasifikacija

- **Piperales** (**Aristolochiaceae**, Piperaceae)
- Canellales (Canellaceae)
- Magnoliales (Magnoliaceae, Myristicaceae)
- **Lurales** (**Lauraceae**)
- Chloranthales (Chloranthaceae)

Crvenom bojom su označeni taksoni zastupljeni u našoj nativnoj flori.

Piperales

Aristolochiaceae

Aristolochia (vučja jabuka) & *Asarum* (kopitnjak)



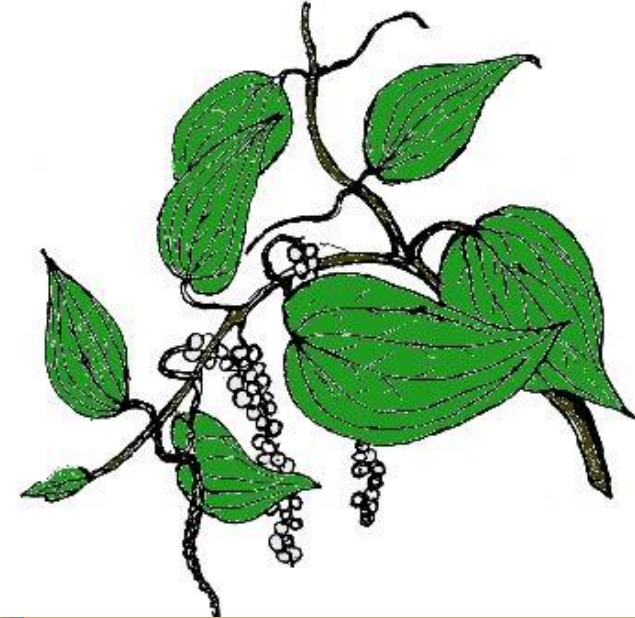
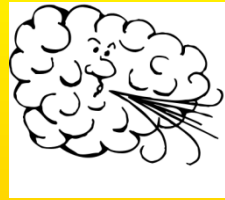
Asarum europaeum



*P(3) A6+6 G/(6)

Piperaceae

Piper (biber)



P0 A3+3 G(3)
P0 A2 G(3)



Jednosjemena
koštunica!

Piper nigrum

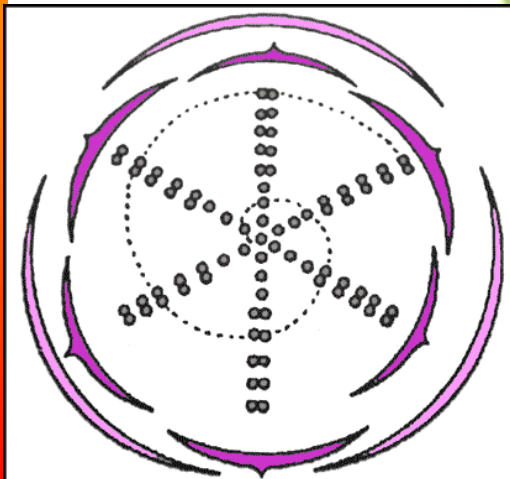
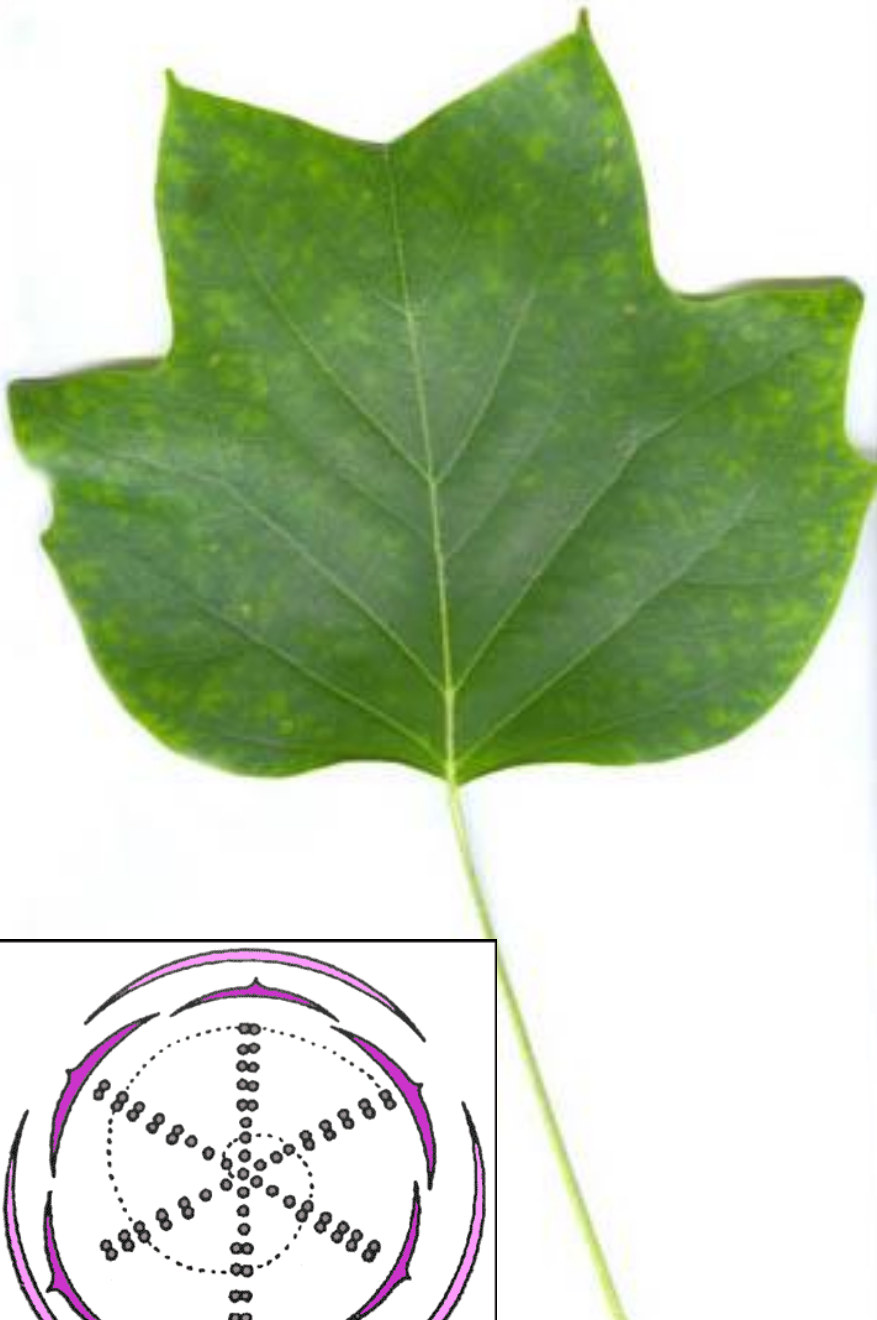
Magnoliales, Magnoliaceae (*Magnolia* & *Liriodendron*)

Magnolia grandiflora

*P₃₊₃₊₃ A_∞G_∞



Magnolia liliflora



***C₃ K₃₊₃ A_∞ G_∞**

Liriodendron tulipifera

Myristicaceae

Myristica fragrans

(muškartni oraščić)



*P(3) A(8-12)

*P(3) G 1

Laurales

Lauraceae

Laurus nobilis (lovor), *Cinnamomum* (cimet), *Persea* (avokado)



***P4 A12**



***P4 A2-4st G(3)**



Cinnamomum zeylanicum- cimet



Persea americana - avokado

